



1-800-337-1537 US ONLY

# Yorkshire Towers

**Free Pattern**

Approximately 46" x 57"  
*Please read ALL instructions  
BEFORE beginning your quilt*





1-800-337-1537 US ONLY

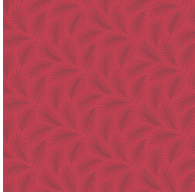
# Yorkshire Towers

**Free Pattern**

Approximately 46" x 57"

*Please read ALL instructions  
BEFORE beginning your quilt*

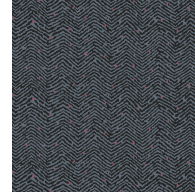
## Colors Used



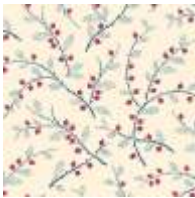
**A-7332-R**  
Total Yardage  
Required for  
Project:  
2-1/2 yards



**A-7665-R**  
Total Yardage  
Required for  
Fussy Cutting  
Project:  
1-2/3 yards



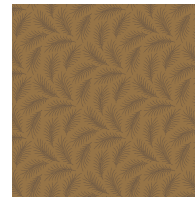
**A-7666-RK**  
Total Yardage  
Required for  
Project:  
1-3/4 yards



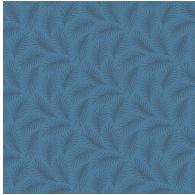
**A-7321-R**  
Total Yardage  
Required for  
Project:  
1/4 yard



**A-7323-GN**  
Total Yardage  
Required for  
Project:  
1/4 yard



**A-7332-N**  
Total Yardage  
Required for  
Project:  
1/4 yard

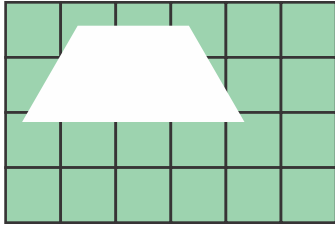


**A-7332-B1**  
Total Yardage  
Required for  
Project:  
1/4 yard

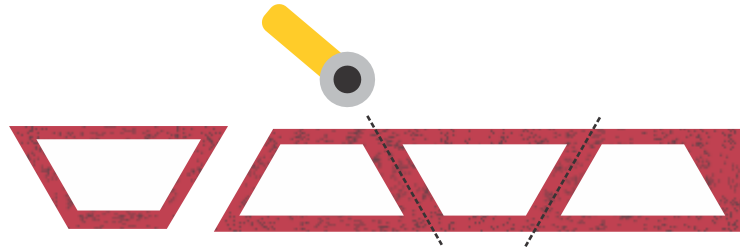


**A-7322-R**  
Total Yardage  
Required for  
Project:  
1/4 yard

## Cutting For Half Hexagons



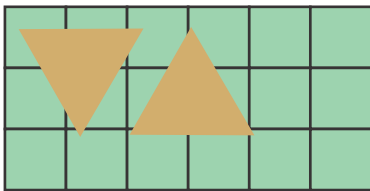
1) Place your half hexagon on the cutting mat to see what size strip you need to cut. In this case, a 2" half hexagon will take a 2-1/2" strip.



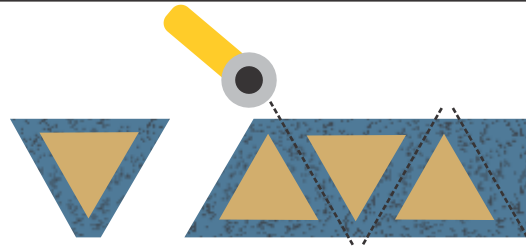
2) Place your half hexagons on the cut strip and allow 1/4" to 1/2" from the top and bottom of the piece.

3) After cutting the strips, use the 60 degree angle for the half hexagons on your ruler and sub cut the strips into half hexagon shapes.

## Cutting For Triangles



1) Place your triangles on the cutting mat to see what size strip you need to cut. In this case, a 2" Triangle will take a 2-1/2" strip.



2) Place your triangles on the cut strip and allow 1/4" to 1/2" from the top and bottom of the piece.

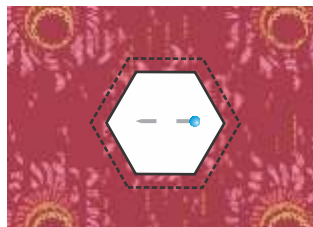
3) After cutting the strips, use the 60 degree angle for the triangles on your ruler and sub cut the strips into triangle shapes.

## Fussy Cutting For Hexagons

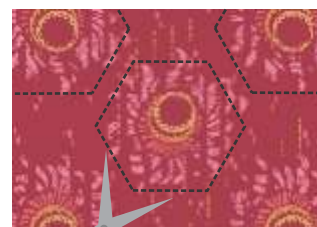


Method A

OR



Method B



1) Method A: Using an acrylic fabric cutting template center the design on the inside marking for the hexagon. Trace around the outer edge with a fabric pen to mark your cutting line. (If you are confident and very skilled you can use a rotary cutter to cut it out)

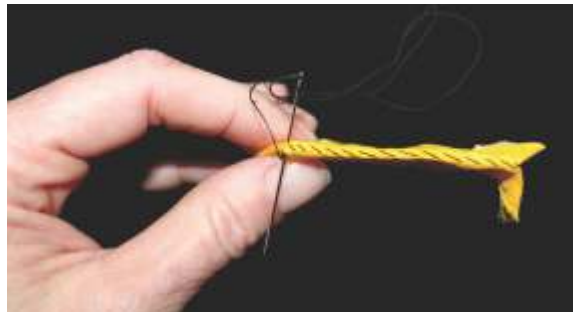
Method B: Pin the Paper Piece Hexagon to the fabric covering the desired area.

2) Cut a generous seam allowance following the marked line if you used Method A. If using Method B simply cut around the pinned hexagon making sure to cut at least 1/4" away from the edge of the Paper Piece.

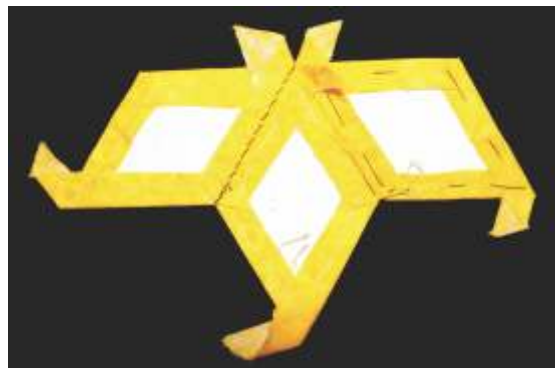
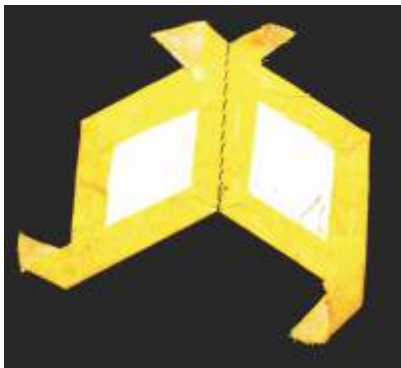


## *Whip Stitching Straight Edges*

After you have a number of pieces basted you can start whipping them together. With a matching thread, bury the knot between the paper piece and the seam allowance. If sewing a dark and light colored piece together, match the thread to the darker color.



Take two anchoring stitches when starting and whip stitch until you reach the next corner. Do not sew through the paper when joining the pieces. Your needle should slide next to the paper between the edge of the paper piece and the fabric, just catching the edge of the fabric.



We recommend about 6-10 stitches per inch. When you reach the “corner”, secure it by taking two stitches together. If your whip stitches are showing on the right side of the fabric, tighten the stitch slightly and catch less fabric. The stitching should be taut and even, but not pulling. Continue whipping pieces together to finish the block.

## *Removing the Papers*

You can remove the papers once a piece is surrounded on all sides. Carefully pull the basting threads and remove the papers from the back side. These papers can be used again.

For the outer edges, press carefully while the papers are still in. This will help the fabric keep the shape of the paper piece. Once all of the edges are pressed, gently pull out the basting stitches and remove the papers from the back side keeping the shape with the seam allowance folded under. It is a good idea to run a basting stitch along the edge to keep the seam allowance folded under.

## *Adding Borders*

### *Cutting The Borders*

Once your quilt top is squared off, measure the long side of your quilt. Add 4" to this number to get the total for your long borders. Cut two borders this size. Match the middles of the borders with the middle of the quilt top and pin borders in place. Sew them to your quilt top (Fig. 1). Repeat the process for the short borders. (Fig. 2). Once both sets of borders are attached, square off the corners and trim away any excess bulk from behind. (Fig. 3).

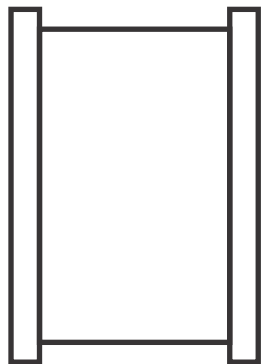


Fig. 1

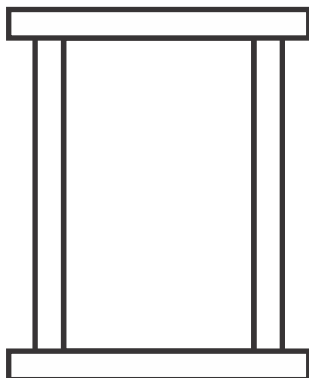


Fig. 2

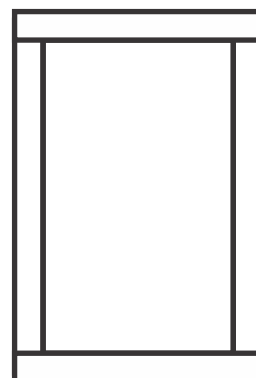


Fig. 3

## Lap Quilt

Quilt Size 46" x 57"

 - Read all instructions before beginning

## Paper Pieces Required

192 - 2" Half Hexagons (HHX200)  
32 - 2" Hexagons (HEX200)  
352 - 2" Triangles (TRI200)

## Fabric Required

### Pieces

Half Hexagons:  
Feather Red (A-7332-R): 1-2/3 yards  
Hexagons:  
Dahlia Red (A-7665-R): 1-3/4 yards  
Triangles:  
Feather Blue (A-7332-B1): 1/4 yard  
Mary's Plume (A-7332-R): 1/4 yard  
Feather Brown (A-7332-N): 1/4 yard  
Mary's Ribbon (A-7323-GN): 1/4 yard  
Mary's Berry (A-7321-R): 1/4 yard  
Herringbone Black (A-7666-RK): 3/8 yard

Inner Border	1-3/8 yard
Outer Border	1/4 yard
Backing	50" x 61"
Batting	50" x 61"
Binding	1/2 yard

## Cutting Instructions

### Pieces

**\*\*Note:** A strip is considered the width of the fabric from selvage to selvage.

#### Half Hexagons:

Feather Red (A-7332-R): Cut twenty 2-1/2" Strips.  
Sub cut into 192 Half Hexagons.

#### Hexagons:

Dahlia Red (A-7665-R): Fussy cut thirty-two Hexagons. See instructions on page 3.

#### Triangles:

Feather Blue (A-7332-B1): Cut three 2-1/2" Strips.  
Sub cut into 60 triangles.  
Mary's Plume (A-7332-R): Cut three 2-1/2" Strips.  
Sub cut into 57 triangles.  
Feather Brown (A-7332-N): Cut three 2-1/2" Strips.  
Sub cut into 57 triangles.  
Mary's Ribbon (A-7323-GN): Cut three 2-1/2" Strips.  
Sub cut into 51 triangles.  
Mary's Berry (A-7321-R): Cut two 2-1/2" Strips.  
Sub cut into 39 triangles.  
Herringbone Black (A-7666-RK): Cut five 2-1/2" Strips.  
Sub cut into 88 triangles.

---

Inner Border	Cut (3) 6-1/2" strips. Cut (3) 9" strips.
--------------	--

---

Outer Border	Cut (6) 1-1/4" strips.
--------------	------------------------

---

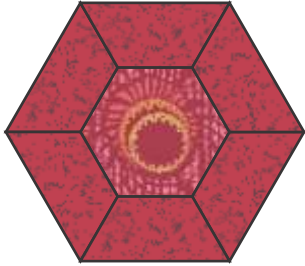
Binding	Cut (6) 2-1/2" strips.
---------	------------------------

## Assembly Instructions

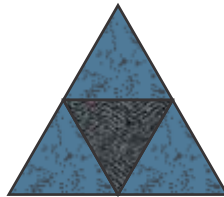
1) Baste the fabric to the Paper Pieces according to the basic instructions.

**Hint for Pointed Pieces:** When basting the half hexagons and triangles, do not finish the points. Fold the seam allowance along one side and baste to the point. At the point, fold the opposite seam allowance over and baste it down. Leave the excess seam allowance at the end point sticking out. When sewing the half hexagons together, hold these small “tails” out of the way and stitch according to the instructions.

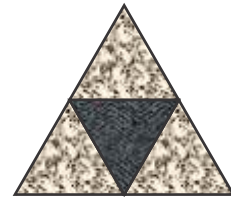
2) Sew the following pieces together to make the following figures (Fig. 1 -6):



**Fig. 1**  
1 Dahlia Hexagon  
6 Feather Red Half Hexagons  
Make 32



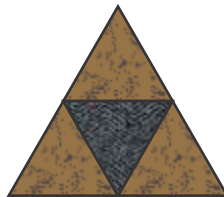
**Fig. 2**  
1 Herringbone Black Triangle  
3 Feather Blue Triangles  
Make 20



**Fig. 3**  
1 Herringbone Black Triangle  
3 Mary's Ribbons Triangles  
Make 16



**Fig. 4**  
1 Herringbone Black Triangle  
3 Mary's Berry Triangles  
Make 13

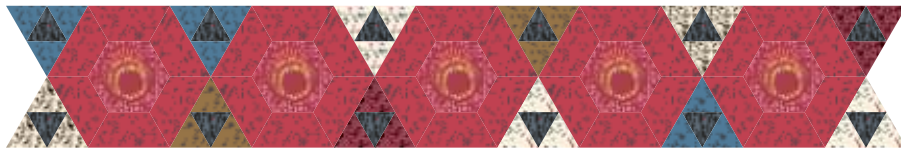


**Fig. 5**  
1 Herringbone Black Triangle  
3 Feather Brown Triangles  
Make 19



**Fig. 6**  
1 Herringbone Black Triangle  
3 Mary's Plume Triangles  
Make 19

3) Take figure 1 and randomly chosen triangles from figures 2 - 6 to make the following rows.



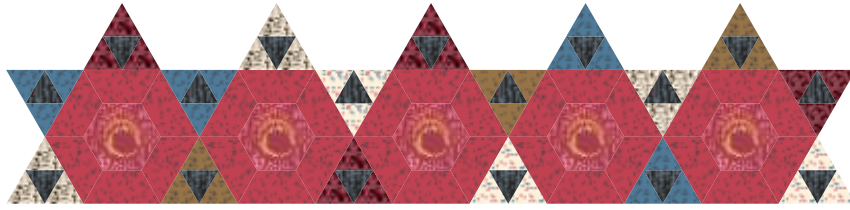
**Fig. 7**  
Twelve randomly chosen triangle sets from Fig. 2 - 6 with five Fig. 1  
Make 4



**Fig. 8**  
Ten randomly chosen triangle sets from Fig. 2 - 6 with four Fig. 1  
Make 3

## Assembly Instructions Continued

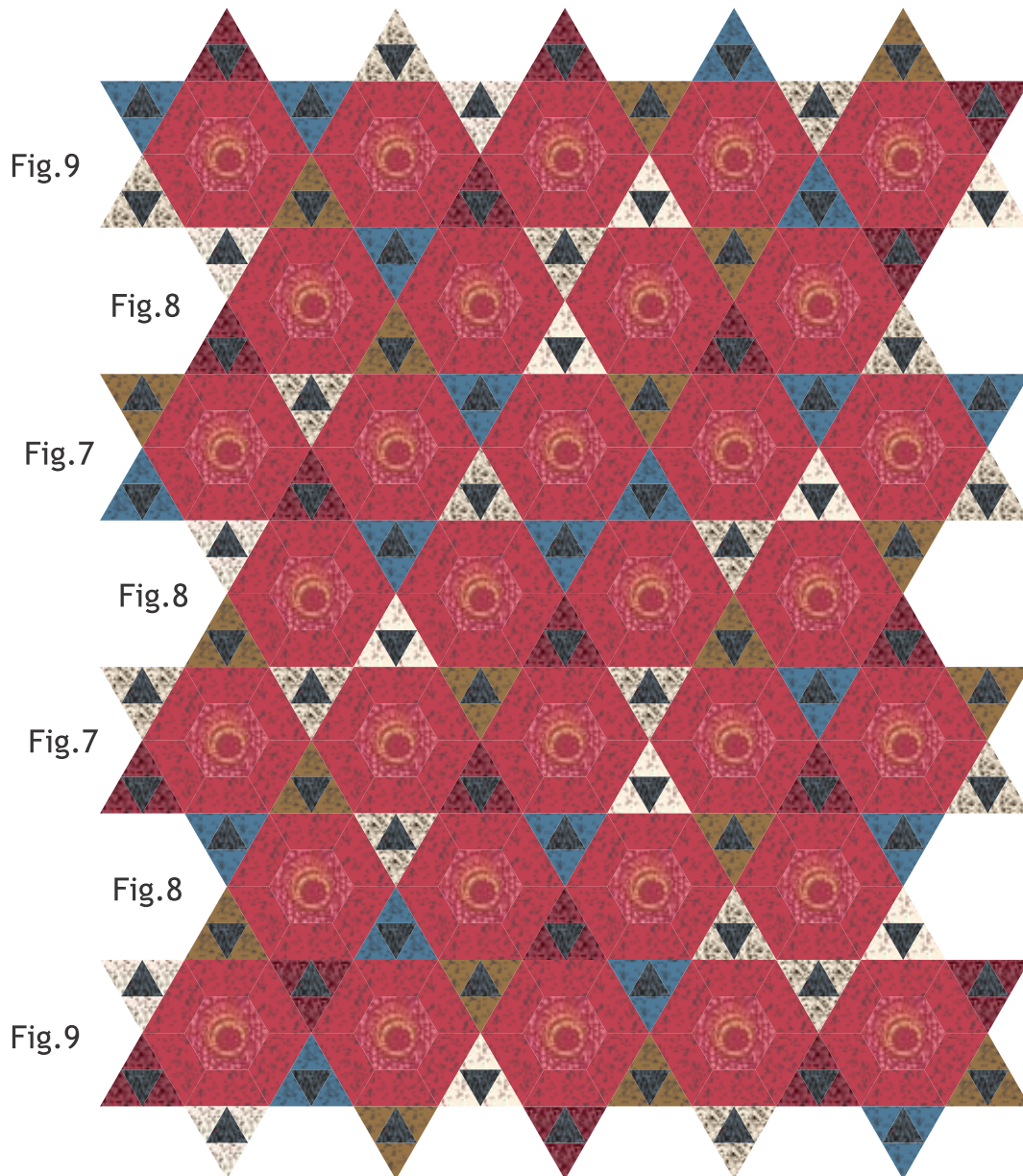
- 4) Using two figure 7 rows, sew the remaining triangle sets to the top. Attach them to the top of figure 1. (Fig. 9)



**Fig. 9**

Remaining triangle sets added to the top  
Make 2

- 5) Sew rows made in figure 7 - 9 together. (Fig. 10)



**Fig. 10**

Fig. 9 / Fig. 8 / Fig. 7 / Fig. 8 / Fig. 7 / Fig. 8 / Fig. 9



## Assembly Instructions Continued

6) Cut two 6-1/2" x 48" border strips for the top and bottom borders. Appliqué the quilt top to the inner border pieces on each end. (Fig.11)

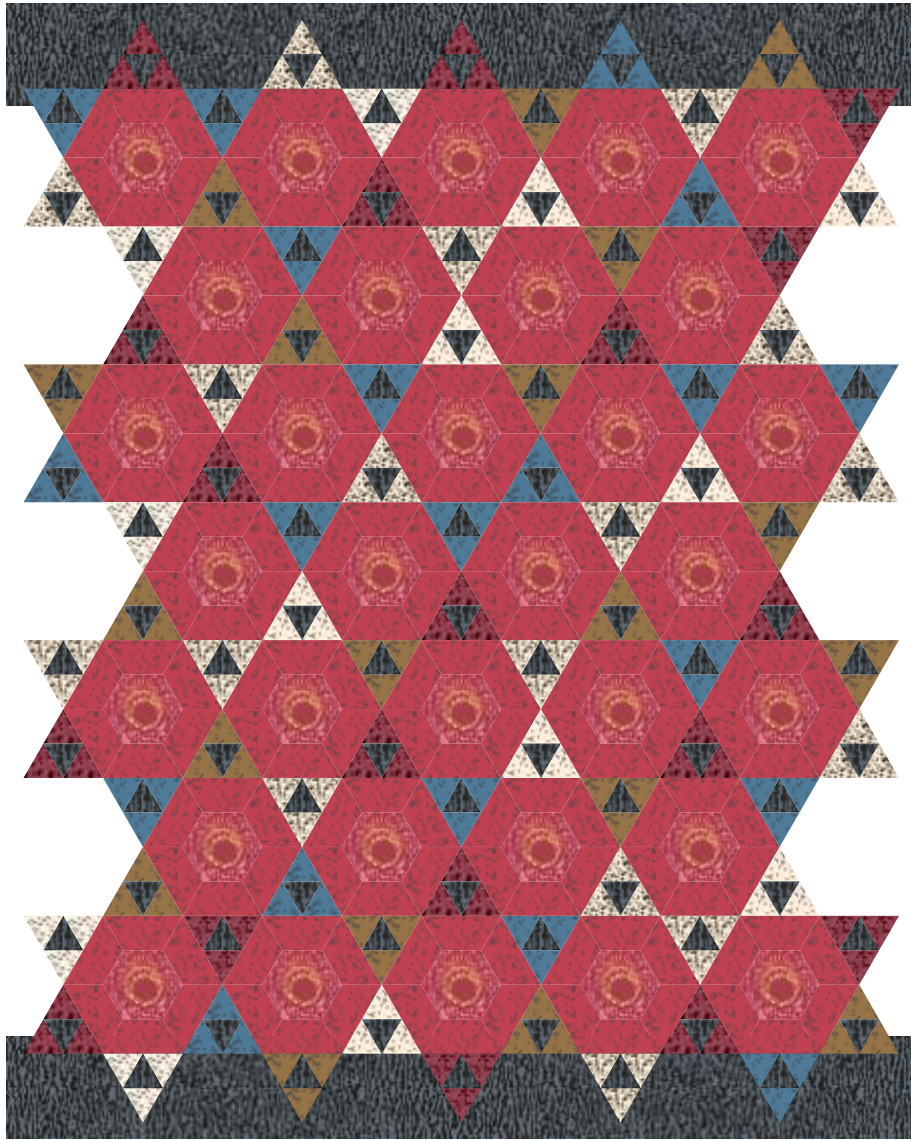


Fig.11  
Top and Bottom borders applied on

## Assembly Instructions Continued

7) Cut two 9" x 52-1/2" border strips for the left and right borders. Appliqué the quilt top to the inner border pieces on each side. (Fig.12)



**Fig.12**  
**Left and Right borders appliqued on**

- 8) Remove papers. See instructions on page 4.
- 9) Add outer border. See instructions on page 5.
- 10) Layer finished top, batting and backing. Quilt as desired.
- 11) Bind and enjoy!